

VisionLux IP Enclosure



VisionLux IP Enclosure is designed to protect your camera, lighting and lens from dust and against the effects of immersion in water to a depth between 15 cm and 1 meter (IP-67)

It also secures your system in place for a better and stable inspection.
For example, on a moving robot arm.

Advantages:

- Secure your camera, lens and lighting
- Come with fitting accessories (lighting, bracket, cable & camera mounting)
- Save time
- Save cost
- Robust design
- Easy to use

It is one of our plug and play module which is so flexible and convenient to use.

Customized units is available to fit special lighting, camera and lens.

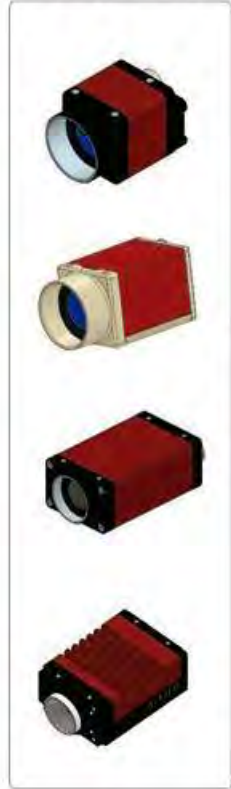


Camera Compatibility

The camera's illustrated below are compatible with the modules.



ALLIED VISION



COGNEX



HIK-VISION



FLIR



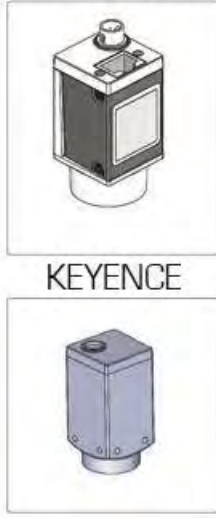
MATRIX VISION



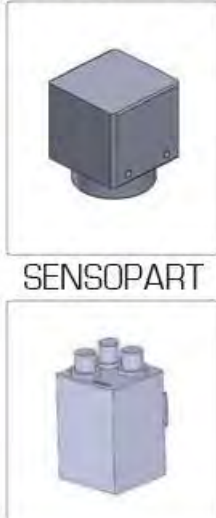
DATALOGIC



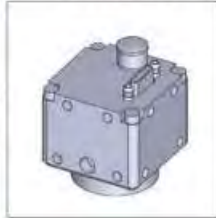
BASLER



TELEDYNE



OMRON



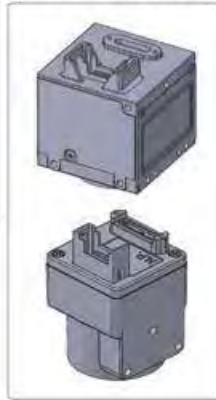
KEYENCE



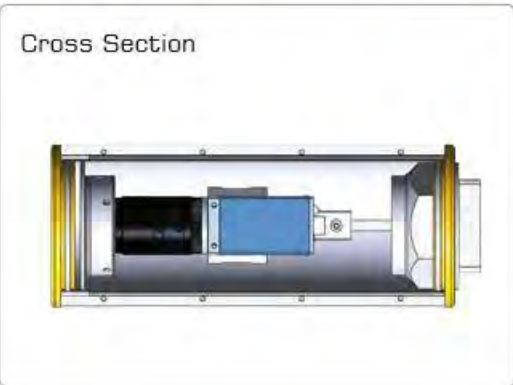
SENSOPART



TELE-TOSHIBA



IPE Enclosure - Dimension 080

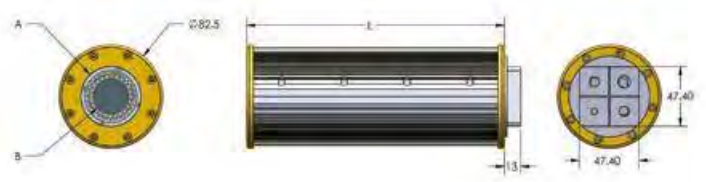


LIGHTING

Double Row



DIMENSION

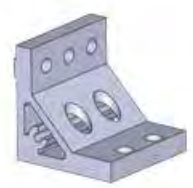


BRACKET

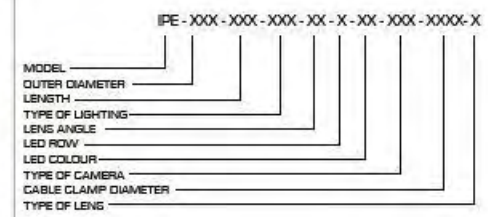
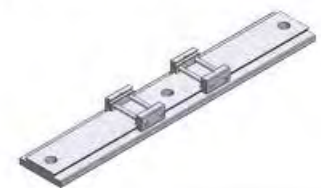
Joint-Bracket 080



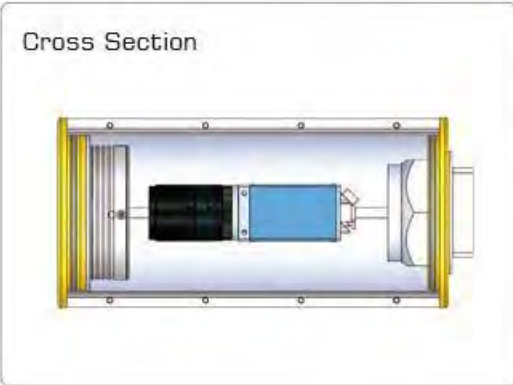
L-Bracket 080



Vertical Track 080



IPE Enclosure - Dimension 100

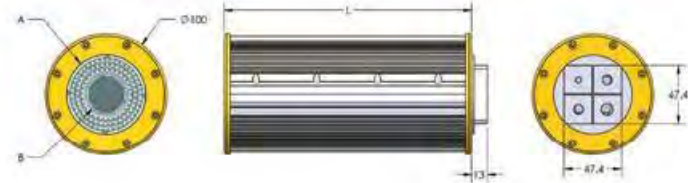


LIGHTING

Triple Row



DIMENSION



BRACKET

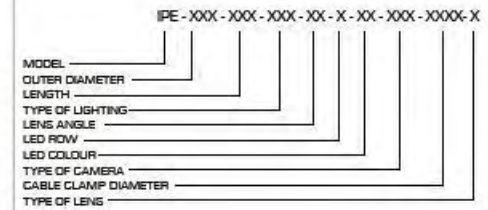
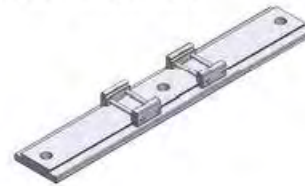
Joint-Bracket-100



L-Bracket-100



Vertical Track-100



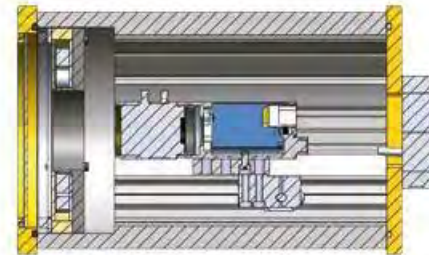
IPE Enclosure - Dimension 130



Exploded View



Cross Section

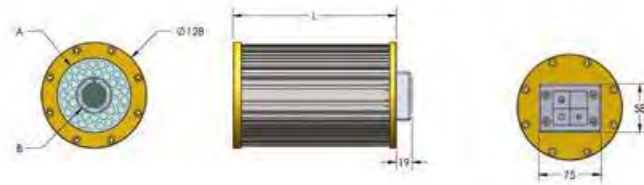


LIGHTING

Triple Row



DIMENSION

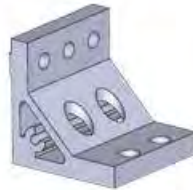


BRACKET

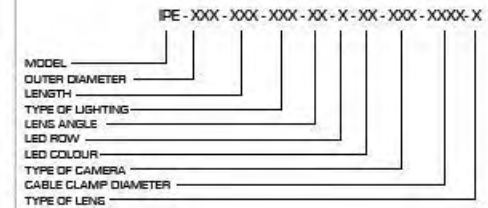
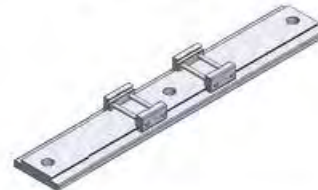
Joint-Bracket-130



L-Bracket-130



Vertical Track-130



Lighting for Dimension 080, 100

Lighting for Dimension 080

M12 Male Connector	M12 Pin Assignment
PIN 1	BROWN 24V
PIN 2	WHITE -
PIN 3	BLUE GND
PIN 4	BLACK -
PIN 5	GRAY -

Model	Voltage / Watt	Color	Current	Weight (g)
LSW-15-050-2-X-24V	24V / 2.16W 24V / 2.52W		90 mA 105 mA	60 g

Lighting for Dimension 100

M12 Male Connector	M12 Pin Assignment
PIN 1	BROWN 24V
PIN 2	WHITE -
PIN 3	BLUE GND
PIN 4	BLACK -
PIN 5	GRAY -

Model	Voltage / Watt	Color	Current	Weight (g)
LSW-15-070-3-X-24V	24V / 4.32W 24V / 5.76W		180 mA 240 mA	100 g

IP Enclosure - Lens

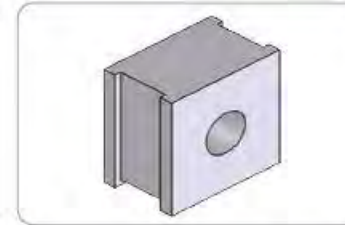
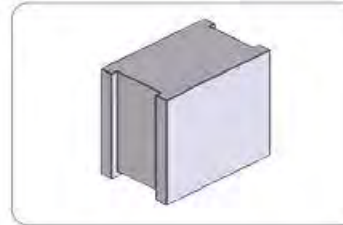
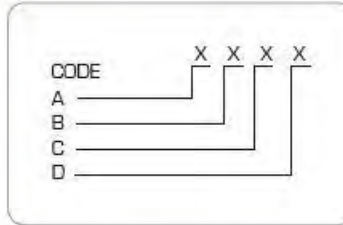
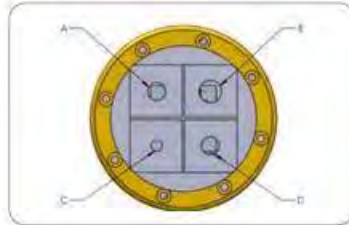
IP-ENCLOSURE-TC-23036



IP-ENCLOSURE-MP-05X






Cable Clamp for 080, 100



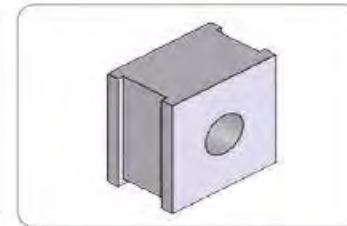
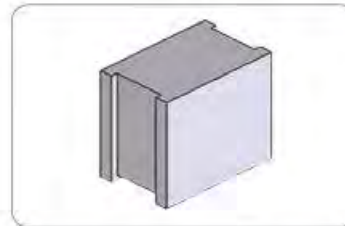
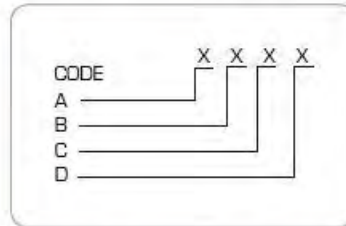
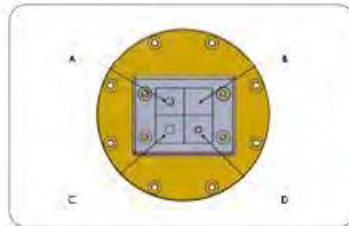
Model	Cable Diameter (mm)	Code
QT3	Ø 3mm	3
QT4	Ø 4mm	4
QT5	Ø 5mm	5
QT6	Ø 6mm	6

Model	Cable Diameter (mm)	Code
QT3	Ø 3mm	3
QT4	Ø 4mm	4
QT5	Ø 5mm	5
QT6	Ø 6mm	6

Brackets

<p>IP-ENCLOSURE: Joint Brackets 080, 100</p>	
<p>IP-ENCLOSURE: L Brackets 080, 100</p>	
<p>IP-ENCLOSURE: VT Brackets 080, 100</p>	

Cable Clamp for 130



Model	Cable Diameter (mm)	Code
BTK	NIL	N
KT - 4	Ø 4 - 5mm	4
KT - 5	Ø 5 - 6mm	5

Model	Cable Diameter (mm)	Code
KT - 6	Ø 6 - 7mm	6
KT - 7	Ø 7 - 8mm	7

Brackets

<p>IP-ENCLOSURE: Joint Brackets 130</p>	
<p>IP-ENCLOSURE: L Brackets 130</p>	
<p>IP-ENCLOSURE: VT Brackets 130</p>	